

Community Newsletter

SHANNON SCHOOL

Friday 5th July 2019

Grey Street Shannon Ph: 06 3627866

Text Your Absences: 027 7555591

Email: office@shannon.school.nz

Website: www.shannon.school.nz

Facebook: Shannon School Te Kura o Hanana



Principal's Voice



Dear Parents/Carers/Community Members

It has been another very busy term. We have had a lot of activities for our tamariki to be involved in, including 'Kids in the Kitchen' and our community 'Matariki' celebration hangi and concert in the Memorial Hall.

It has been a frustrating time for teachers and principals in negotiating work claims with the Ministry of Education and government. Teachers have accepted the latest claim offer but the principal claim has been rejected by principals. We are yet to know what this will entail. At present many of our teachers in management roles will be getting a higher wage than our principals in smaller schools. We have our Support Staff about to now go into their pay negotiations - we all wish them well, as they are also presently greatly undervalued by government.

Mid-Year Review

As it is mid way through the year it is timely to reflect on our targets, goals and the strategic direction of the school. When looking at the Ministry of Education plan of 2016-2020 I believe we have embraced all of the recommendations. We have certainly championed 21st century practice in teaching and learning. The most recent innovation for us is the introduction of Play Based Learning. One of the results of this is that our young children are happy, engaged and wanting to learn. They look forward to coming to school. We are presently doing work in transitioning our early childhood tamariki into the school and school into college.

Local Curriculum

At the end of last year we held a community interactive hui to set the direction for the school. We had a great turn out. Following on from this we are proposing to hold a 'local curriculum' review later in the year. We already have a number of proposed initiatives in developing more environmental studies and authentic contexts for learning. We will again be asking for your assistance in developing a unique Shannon School curriculum. Look out for our community posters later this year.

Horowhenua House of Science

We have the privilege of hosting this service at our school. The House of Science puts together science kits that are provided for weekly use across all Horowhenua Schools. We have already used several of these kits and our kids have been totally engaged in the hands-on activities provided.

Assistance at School

We have a number of community members, who don't have children or mokopuna at the school, presently volunteering with activities in the school e.g. breakfast, gardens and reading with individual children. A big thank you to you all as we can see the positive influence this provides for our children. As the African proverb states "It takes a village to raise a child". A school is not the only place where education and learning occurs. If you have any particular skills you think would be useful for learning, or would just like to engage with children in their learning, please let us know.

Ngā mihi
Murray Powell

Board of Trustees



Tēnā koutou katoa

On behalf of the School Board of Trustees I wish to give many thanks to our departing members who have served Shannon School with their generous time and skills to do the best by our children and staff. Brendan Mason, Samantha Hazelwood we salute you.

Secondly, I wish to congratulate and welcome our new members to the Board, Wylie Te Peeti, Leigh Harrington, Priscilla Wade, Verona Sayles, Virginia Kohika (Marae Rep) and Sarah Sheehan (Staff Rep). Thank you also to our parents who put themselves forward for the Board, Matt Pilkington, Lani Ketu, Jodie Richardson and Tamara Bal.

"Whaia te iti kahurangi ki te tuoho koe me he maunga teitei"

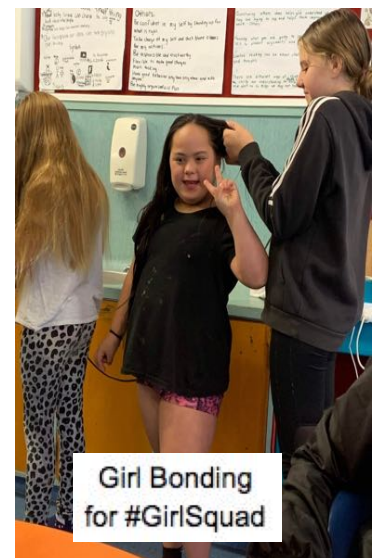
Seek the treasure that you value most dearly, if you bow your head, let it be to a lofty mountain. This whakataukī is about perseverance and endurance. Refusing to let obstacles get in your way while striving to reach your goals. May all our children be equipped to reach their full potential.

Hari Matariki Whanau

Rhea Hyde



Term 2 Learning in the Harakeke Hub





Baking for 'Kids in the Kitchen' day. Creating 'layers of the earth' as part of our science kit.



Our Matariki artwork based on the story 'Little Kiwi's Matariki'.



Building creations as part of P.B.L.



Building strong friendships with Shannon Kindy tamariki

OFFICE NOTICES

Welcome to our Term 2 Community Newsletter. There has been a number of highlights. Our Kids in the Kitchen week and our Matariki Celebration would be at the top of the list.

Our tamariki worked with Marina Alletson, a nutrition advisor for Mid Central Health and the Heart Foundation, and Emma Williams, who is our health promoting schools advisor. The pair taught the children about healthy eating and making healthy items for their school lunches. We had a big shared lunch with everything the children had prepared. Some kai was donated, we also harvested food from our school garden. Every child received a free lunch box and drink bottle. We have really noticed that our children are now making healthier lunch box selections. There has also been a reduction in packet food. This is great for our planet. KAI PAI KIDS!!



Matariki was amazing! There were hours of hard mahi for this event by our tamariki, staff and community volunteers, but it was well worth it. It was great to come together to celebrate Matariki. Please accept this as a personal THANK YOU if you were involved in this event.

Our tamariki have had fun learning about science with the new House Of Science school kits. The rockets were the best! We are lucky to have this organisation in our area to access such a great learning resource.



Our children will be working on beautifying our school with individually decorated rocks in the coming months. A big THANKS to BUNNINGS in Palmerston North for donating some paint and brush supplies and Ben Frea from RESENE PAINTS in Wellington, for this project. YOU ROCK!!

We are always overwhelmed with the generosity of strangers. Recently we were contacted by Julie who lives in Kapiti. She had heard about our wonderful school garden from Kath Irvine. She offered to donate another Hungry Bin worm farm. We already have one system and jumped at the chance to be able to compost more waste in

this way. We are now fully composting all possible waste into our worm farm or into the garden. This has seen a huge reduction in our litter going to the landfill. We also recycle paper and cardboard. We are now an official drop off for Nespresso Capsules and Nescafe Dolce Capsules. Feel free to drop them into our kura if you use these at home. We still send off Oral Care Waste under the TerraCycle Programme. We are trying to do a bit for the environment. Start collecting your old toothbrushes, toothpaste, floss containers and the packaging and drop them into the school office.



If you have not visited our school in a while or are new to Shannon, we love visitors. You are more than welcome to come into our school and see the wonderful learning our children are experiencing. Recently we have met a number of new members in our community and had some ex pupils visit. WELCOME/MANAAKITIA. It has been great to have such positive feedback about what we are offering our children. And the school is looking fabulous! Thanks Beau and Carol B.

This term our school entered a competition to win netball gear from Fly Palmy (Palmerston North Airport). We were lucky enough to be chosen as the winners! We received \$300 worth of netball gear for our teams to use. Bernie, the mascot from Fly Palmy came to deliver the gear and we had so much fun hanging out with him and he was a great dancer! Thanks so much Fly Palmy, we really appreciate the new gear!





SPEAK UP, STAND TOGETHER, STOP BULLYING #pinkshirtday
 Thanks so much to Jacqui for organising Pink Shirt Day this term. We all wore pink to show our support and stand up against bullying. It is an important message that is close to our hearts at Shannon School. Thank you to everyone who got involved this year.

RECYCLE YOUR NESPRESSO CAPSULES AT WORK

The Nespresso experience is about more than just great coffee. Nespresso is also committed to sustainability with innovation in recycling being crucial to achieving our long-term goals. Nespresso uses aluminium for its capsules, as it is the best material available today to protect the freshness, taste and quality of the Nespresso Ground Coffee. Aluminium is also infinitely recyclable. This means that there is potential for a closed-loop aluminium capsule.

THIS RECYCLING PROGRAM IS EXCLUSIVELY FOR NESPRESSO ALUMINIUM CAPSULES

There are some things that New Zealand's domestic rubbish systems cannot efficiently process. What is why, since opening our first boutique in 2011, Nespresso established its own recycling system and partnered with a recycling plant that could process Nespresso aluminium capsules. So when you have finished enjoying your Grande Cup please return your Nespresso aluminium capsules to us. We will see to it that they go on to achieve their potential through recycling.

www.nespresso.com/gb
0800 488 080 (Toll-free)

NESPRESSO

<p>Farm Source 25 Stafford Street, Shannon Ph: 3629000 www.farmsource.com At Farm Source, everyone is welcome. Plus, no joining fee!</p>	<p>Shannon Four Square Available Daily Kools Chicken & Chips Fresh Homemade Pies Lotto Ph: 3627876</p> <div style="text-align: center;"> </div>	<p>P. B. MOTORS (1993) LTD. Proprietor: RORY & STEVEN 45 Ballance Street, SHANNON Phone/Fax: 06 362 7601 After-Hours Mobile: 0276 252 9814</p> <div style="display: flex; justify-content: space-around;"> </div> <p>ALLES SERVICE VEHICLE Ford, Opel, VAG, Fiat, Mercedes, Volvo Tyres, Batteries, Accessories</p>	<p style="text-align: center;">TOWING 24 HOUR SALVAGE</p> <p style="text-align: center; font-size: 2em;">AA</p> <p style="text-align: center;">BREAKDOWN SERVICE</p>
<p>Highway Bakery & Cafe Open 7 Days Ph: 06 3627820 6 Ballance Street, Shannon Coffee by Robert Harris</p> <div style="display: flex; justify-content: space-around;"> </div> <p style="text-align: center; font-size: small;">STANDARD COFFEE 66 CENTS PER CUP</p>		<p style="text-align: center; background-color: red; color: white;">CITY HONDA</p> <p style="text-align: center; font-weight: bold;">WE'RE PROUD TO SUPPORT SHANNON SCHOOL, WITH TWO GREAT LOCATIONS.</p> <p style="text-align: center; font-size: x-small; color: red;"> City Honda Manurewa (09) 237 7000 City Honda Auckland (09) 237 7000 City Honda Manurewa (09) 237 7000 City Honda Auckland (09) 237 7000 </p>	